

Prostrations

Respectful greetings

Namo Buddhaya

Enlightened persons

Namo Dharmaya

Way, path, method

Namo Sanghaya

Pure hearts





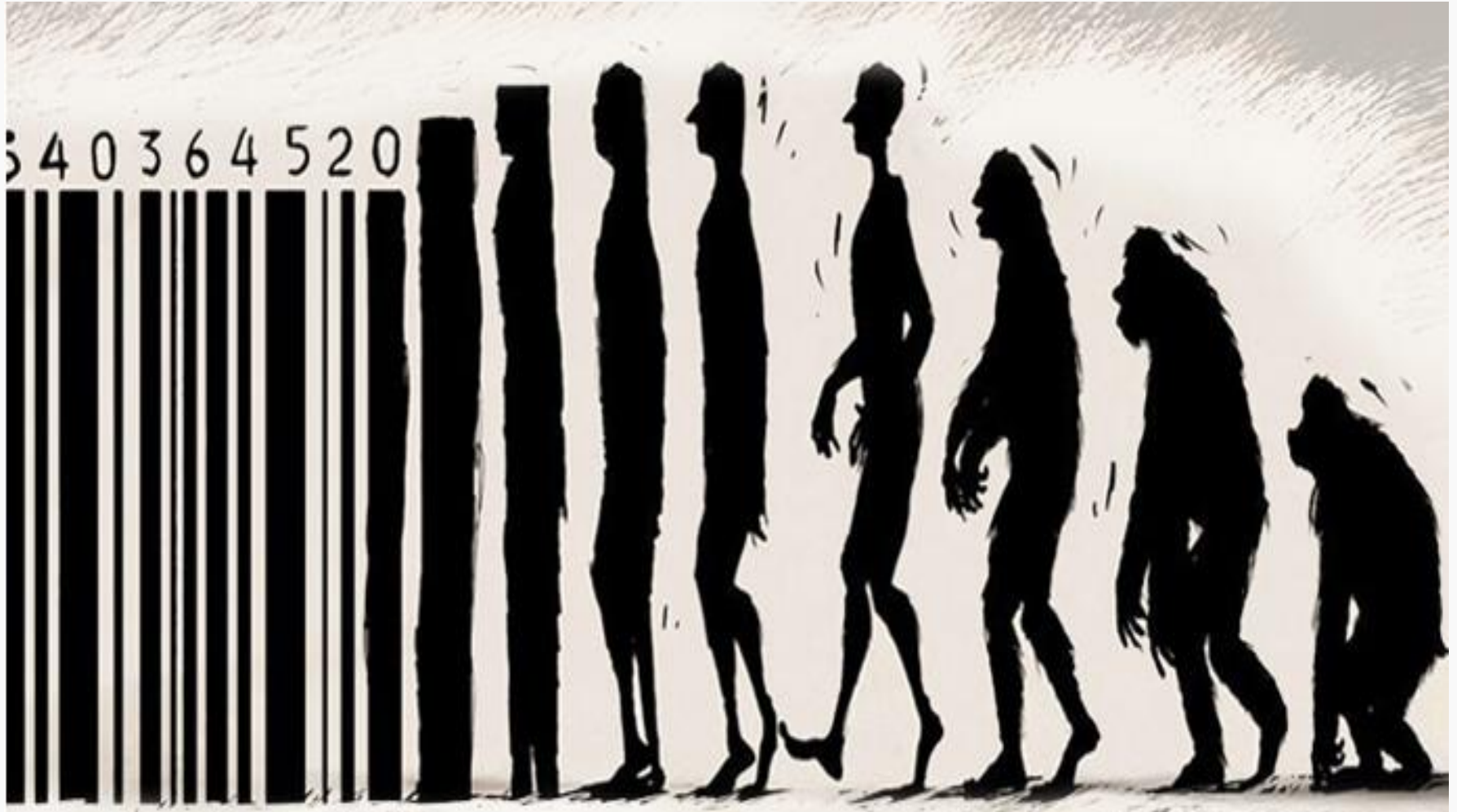
Evolution of Self/I/Ego

Forget-me-not

www.AWE-edu.com



型 Evolution of Self/I/Ego





Evolution of Self/I/Ego

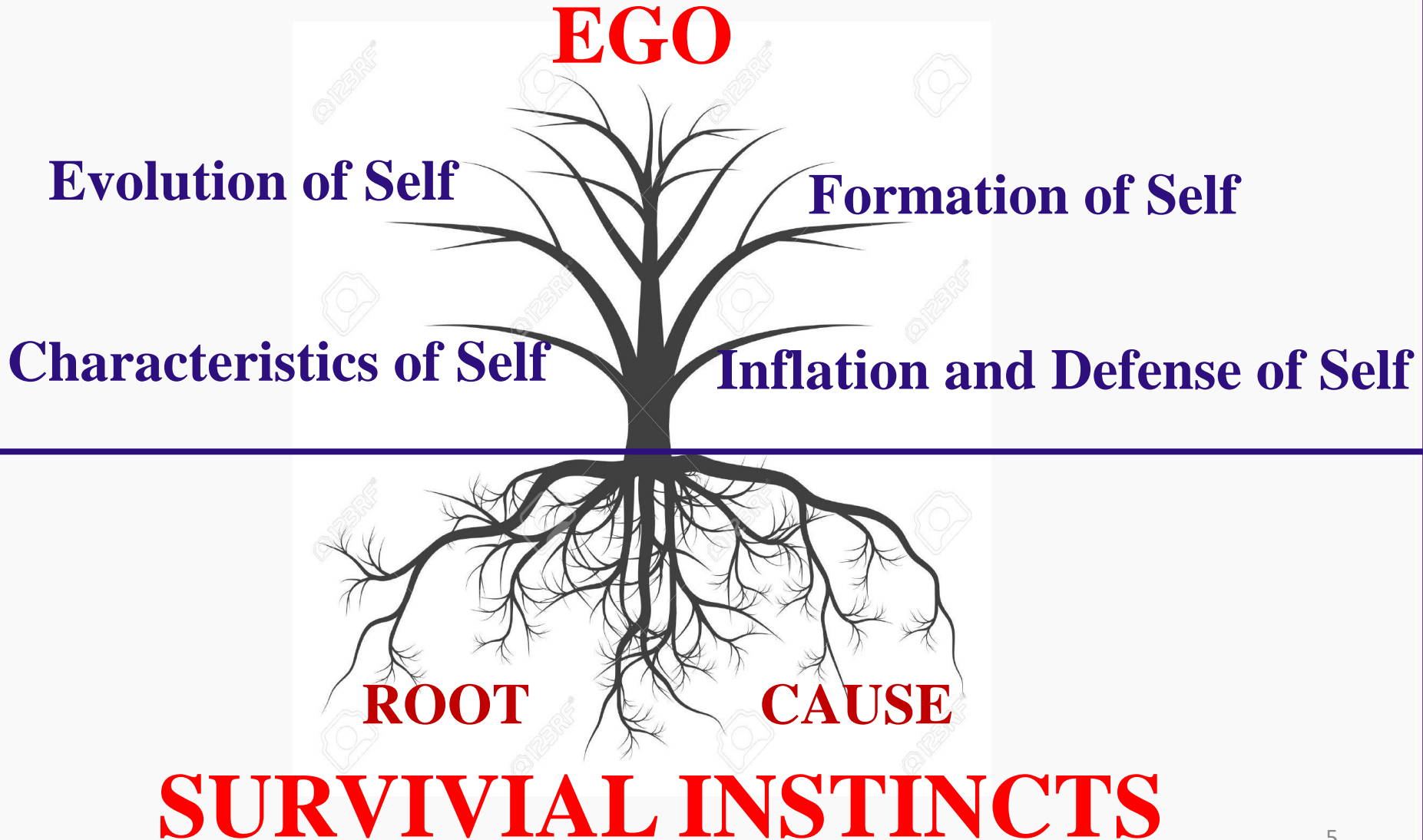
SURVIVE

SURVIVAL INSTINCT

END



Evolution of Self/I/Ego



Calvinism doctrine of “Total Inability or Total Depravity”

John Calvin (1509 – 1564) – French theologian

As a consequence of the fall of man into sin, **every person born into the world is enslaved to the service of sin.** People are not by nature inclined to love God with their whole heart, mind, or strength, but rather **all are inclined to serve their own interests over those of their neighbour** and to reject the rule of God. Thus, all people by their own faculties are **morally unable** to choose to follow God and be saved because they are unwilling to do so out of the **necessity of their own natures.** (The term "total" in this context refers to sin affecting every part of a person, not that every person is as evil as possible.)



Calvinism doctrine of “Total Inability or Total Depravity”



“every person born *into* the world is enslaved to the service of sin.”

**All beings by nature desire to survive – sin – suffering
“I was born to survive.”**

“all are inclined to serve their own interests over those of their neighbour ” Self-centered – competition for survival

“morally unable” Do not care for siblings or others

“necessity of their own natures” People by nature are evil.
Ego = evil = bad

**Concept of sin = sense faculties – thought process – duality
view (good/bad) – suffering – original sin**



Evolution of Self/I/Ego

Buddhism

Calvinism

- **Three cardinal sins (3 poisons): Greed, hostility and ignorance**

**Original sin:
The sin is innate in all beings.**

- **Seek salvation on one's own, not through anyone else. Therefore, one must have confidence to find liberation on one's own.**

Seek salvation only through Jesus Christ. Therefore, one must have faith in Jesus Christ totally.

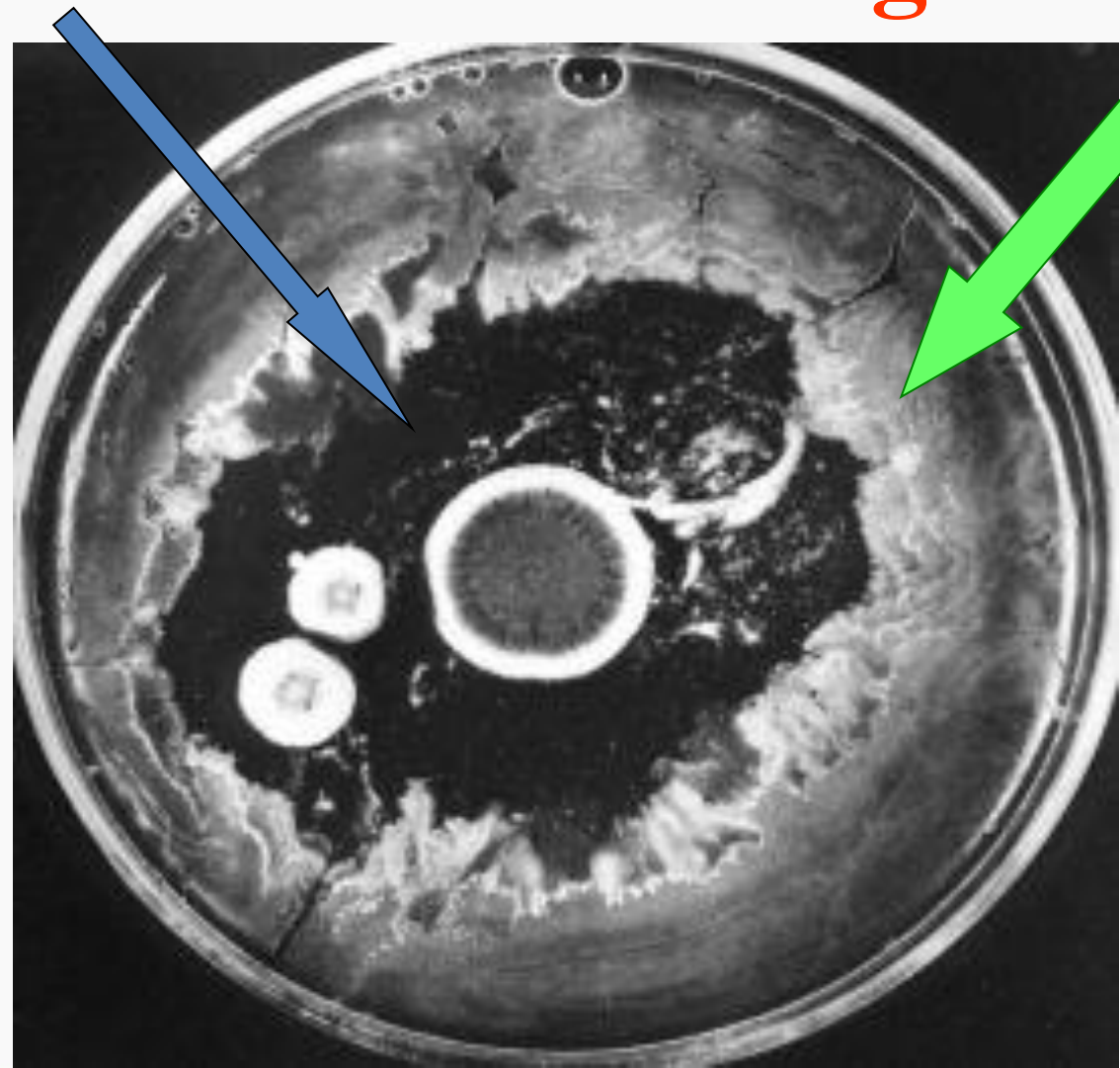
- **6 sensory faculties lead to faulty perception, which create suffering.**

Faculties create sins.



Basic evolution with bacteria

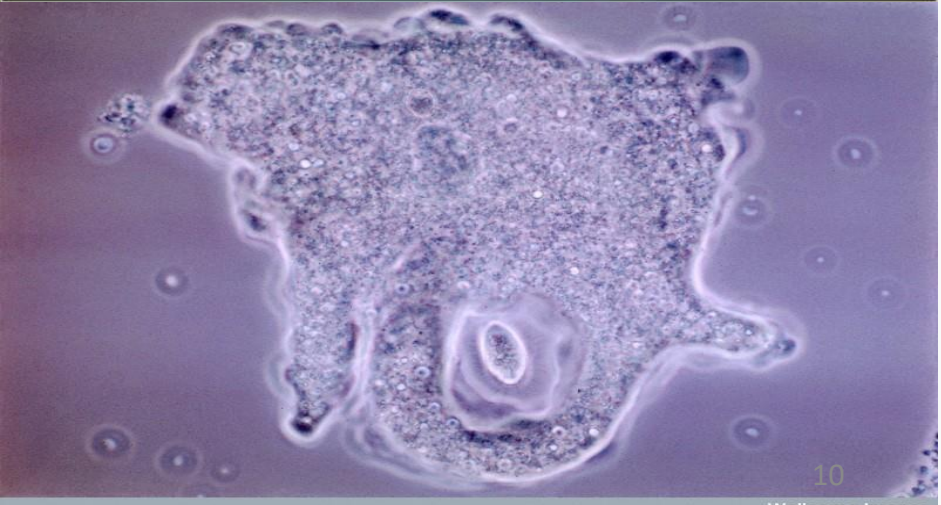
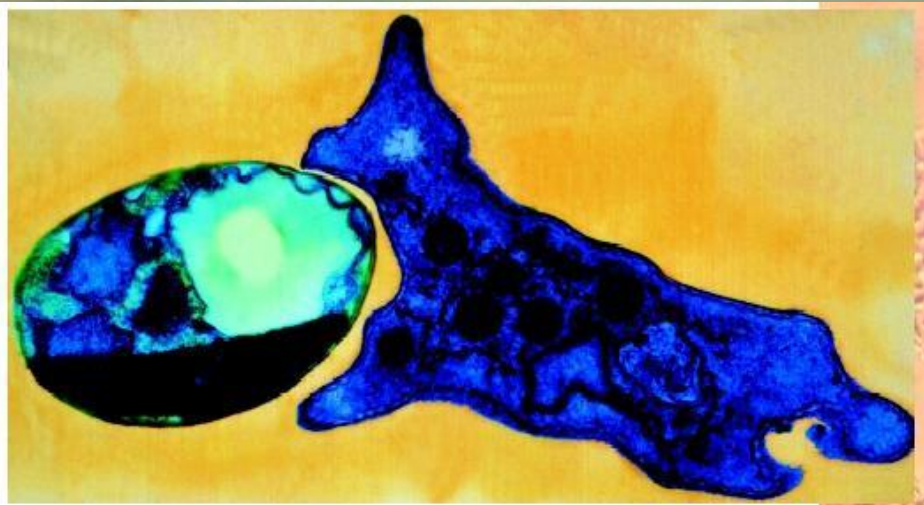
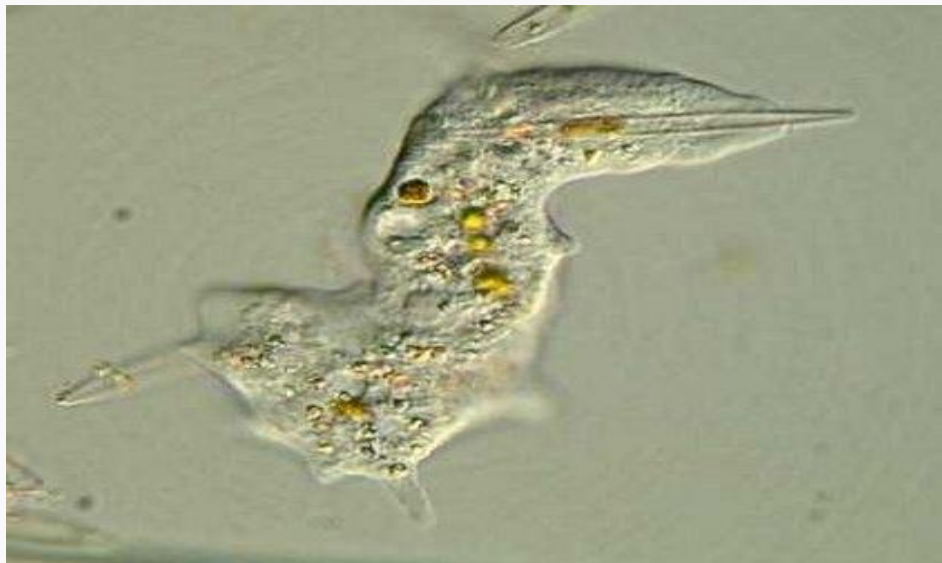
Penicillium mold killing bacteria





Basic evolution with microbes

Amoeba ingesting diatoms, bacteria, algae





Survival Instincts



Life and death
Suffering in the life
of Self/I



Formation of “Self/I/Ego”

- Since beyond antiquity, some basic conditions are required for the evolution of microbes into higher life form:
- First and foremost is the “**desire**” for “Self/I/Ego” to **survive**.
- Second, for “Self/I/Ego” to take “**shape/structure/form**”, some basic survival needs must be met. These needs are air, water, food, excretion, health, shelter, reproduction. This basic survival needs are common to all living creatures (**Survival Instinct**). It has not developed into Human Instinct yet.
- Third, through interaction and integration with its environment, “**Self/I/Ego**” **thoughts are created**. These thoughts must nurture its Structure, while Structure further nurtures its Thought. A “**cause and result**” **vicious circle** is created.



The Formation of Self/I/Ego

Since beyond antiquity, in the evolution of microbes to human, the **desire and survival of Self**, has been the number 1 priority of all life form.

From this desire of survival, through the interaction with its environment, shape and thought are created. Through mutual nurturing, a **vicious circle** is formed.

From this **vicious circle**, **greed, hostility, ignorance** are created.

Greed is created by the **survival necessity** of **Self**. Even single-celled organisms including virus wants to survive: afraid of death, hunger, etc.

hostility is created by the **survival necessity** of **Self**. Hence, survival of the fittest: incessant competition.

Ignorance is created by the **survival necessity** of **Self**. Hence, when Self fails to understand the instinct of **Self**, "**Unenlightened**" results.



Evolution of animal Instincts

Survival instinct – animal instinct

I/Ego - eat **eat eat** - sin - **greed**

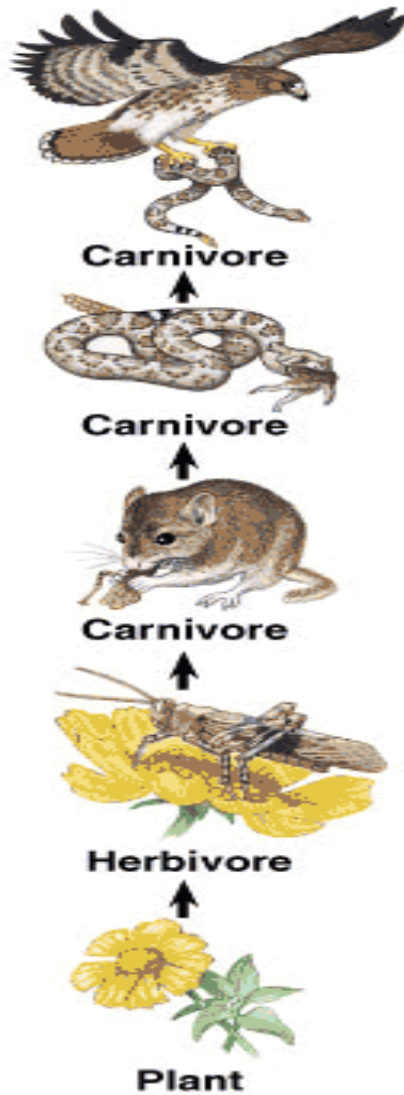
I/Ego - kill **kill kill** - sin - **hostility**

I/Ego - unaware **unaware unaware** - sin - **ignorance**

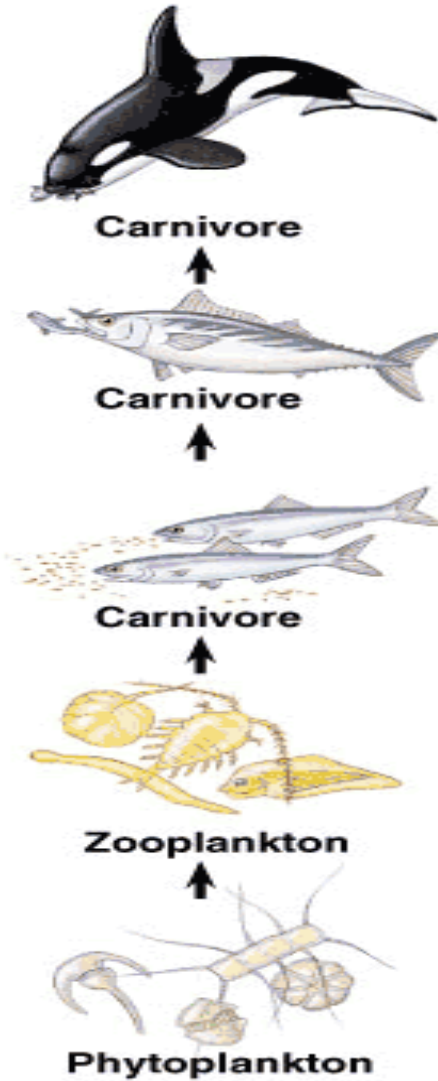
**“The service of sin”
suffering**



Food Chain



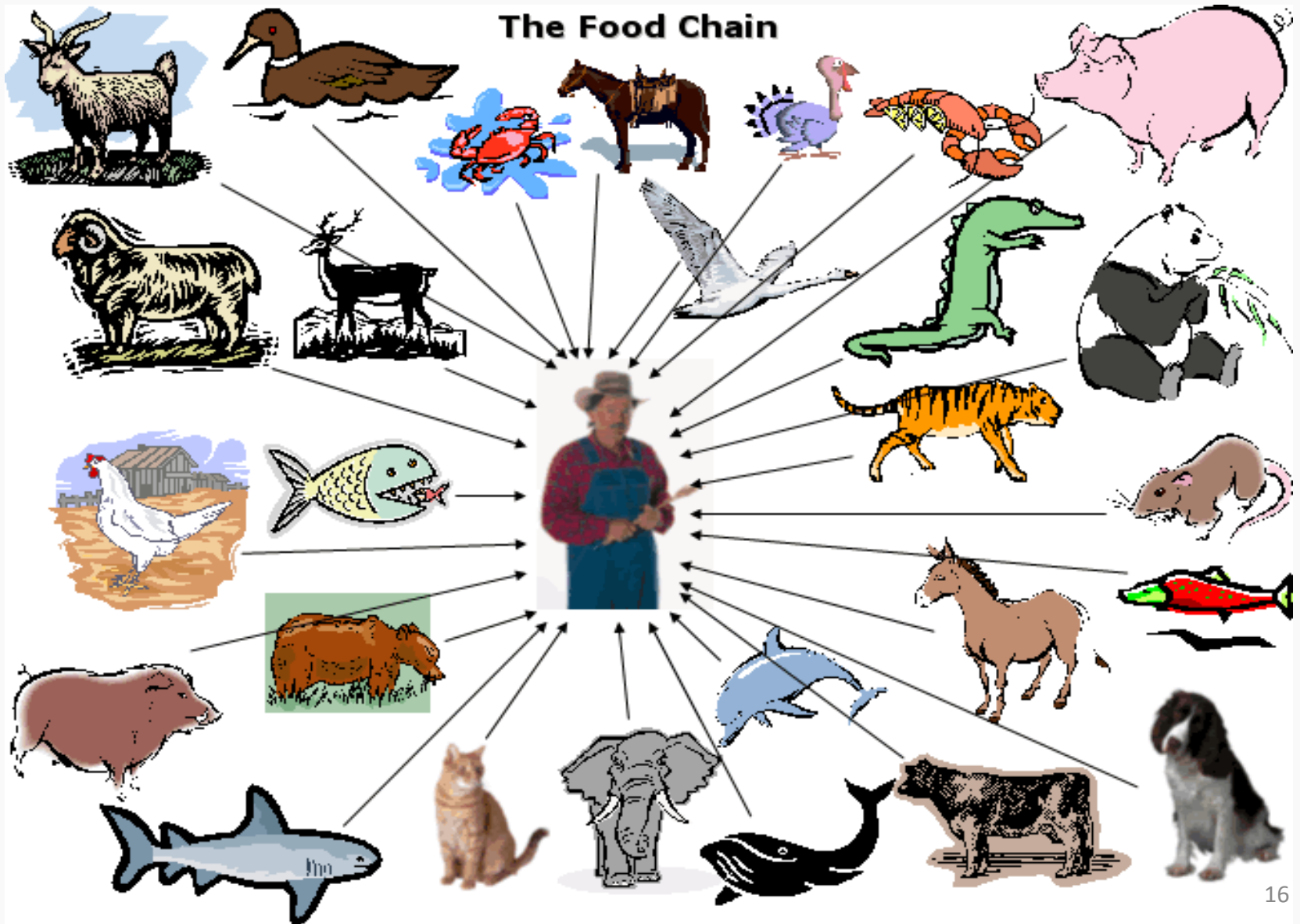
A terrestrial food chain



A marine food chain

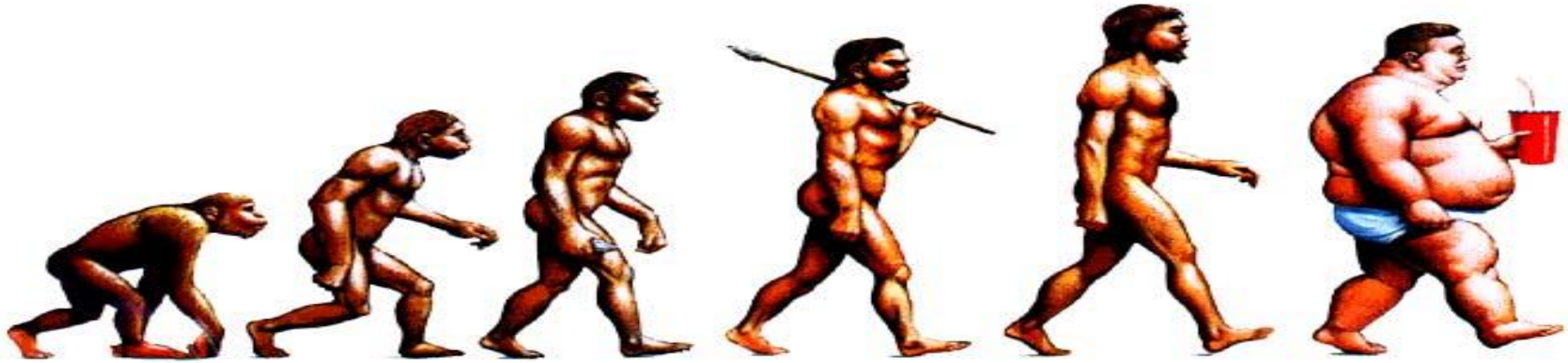


Human Food Chain

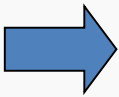




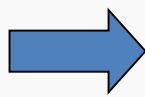
Evolution of Human Instincts



Survival
Instinct



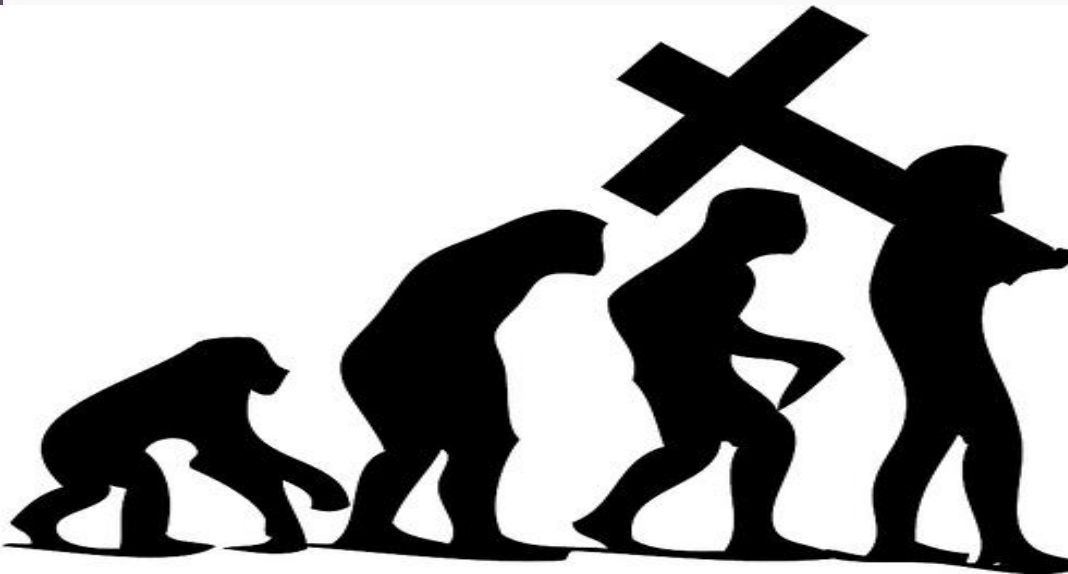
Human
Instinct



Spiritual
Instinct



True
Consciousness





THE END

Thank You





Transfer of merit

By this effort, may all sentient beings be free of suffering.

May their minds be filled with the nectar of virtue.

In this way may all causes resulting in suffering be extinguished, And only the light of compassion shine throughout all realms.

